

# Wet Hydrant

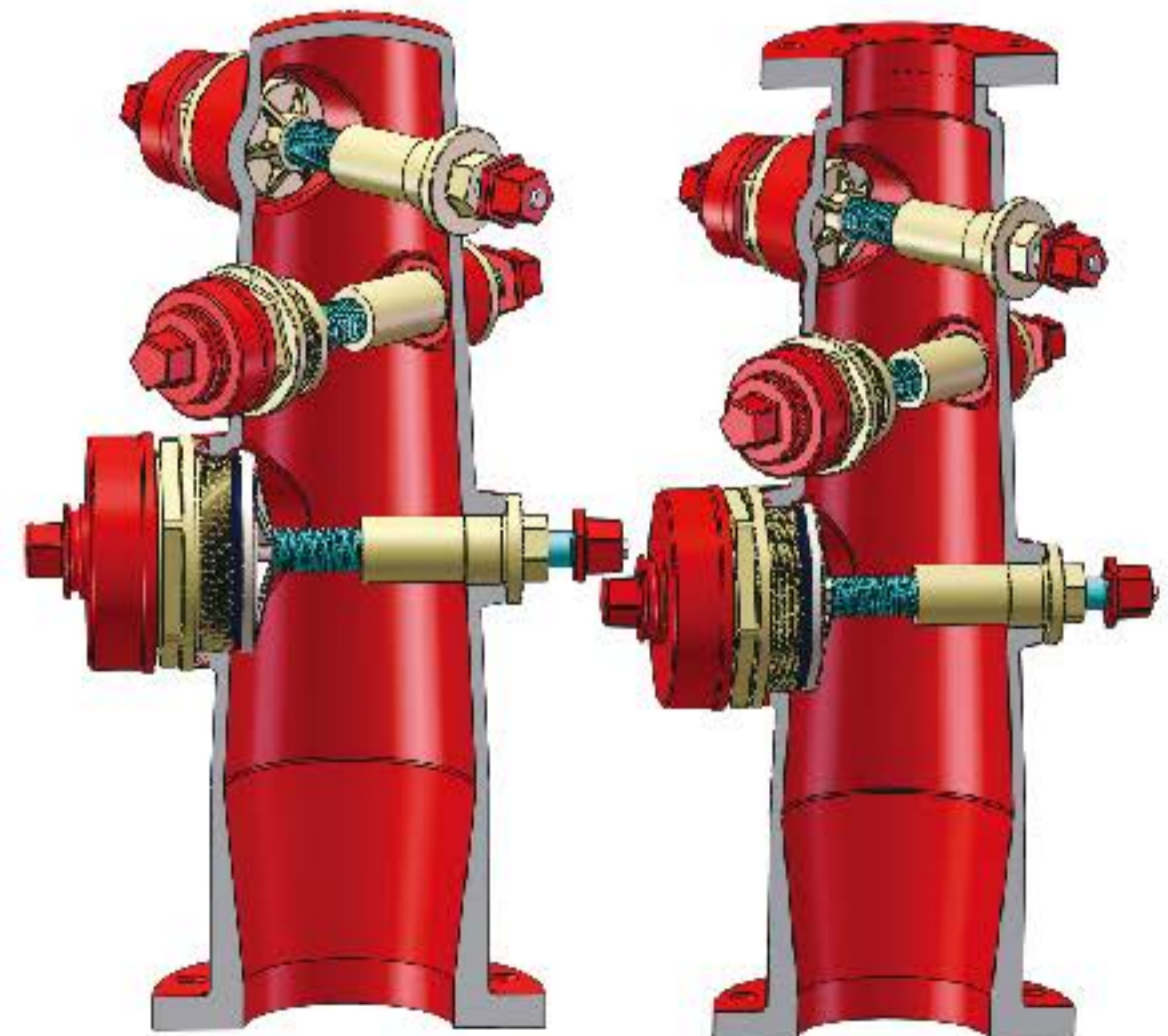
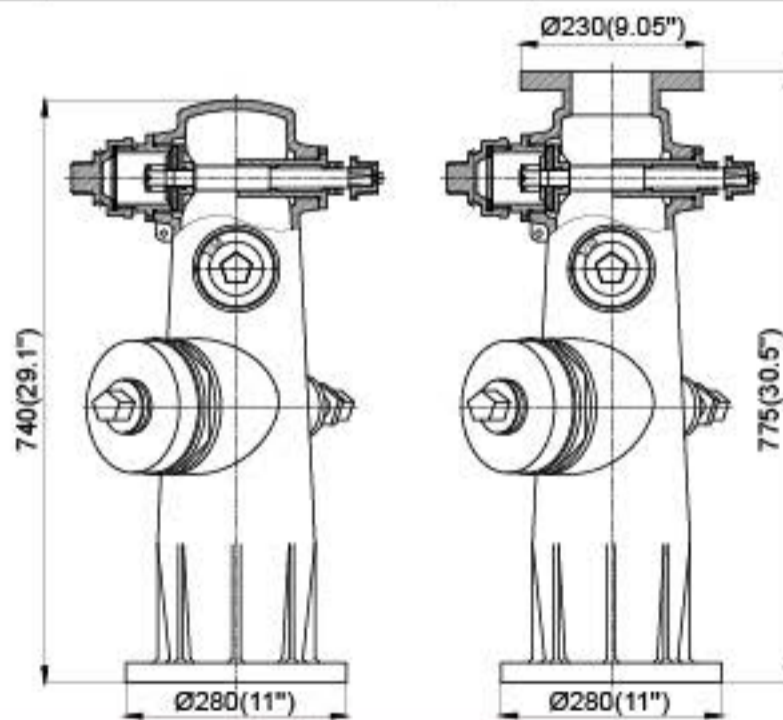
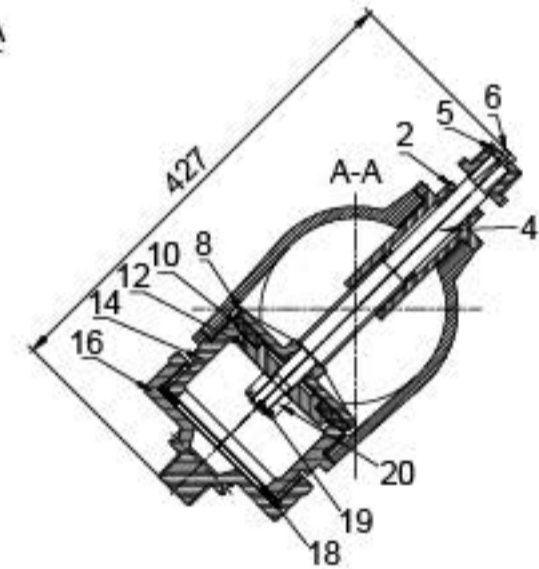
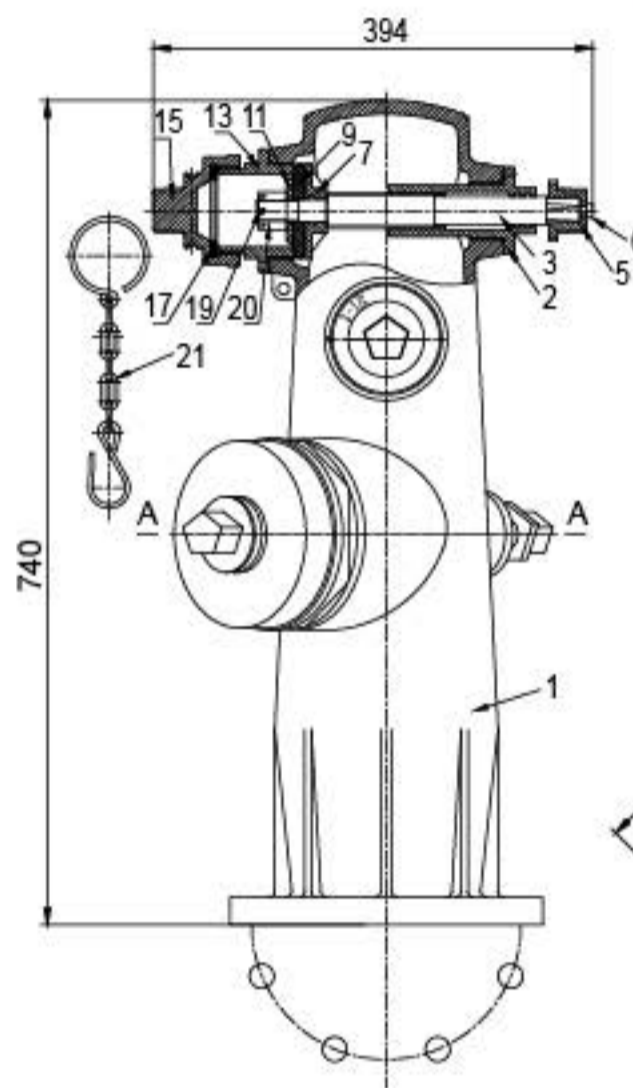
# Model: MH-1511/1511A/1512/1512A

## Technical Features

- Design Standard: AWWA C503
- External Thread Standard: NFPA 1963 2.5"-7.5NH/4"-4NH/4.5"-4NH
- Water Inlet Flange Standard: ASTM B16.5 Class150 6"/DIN2501 PN16 DN150
- Maximum Adjust Pressure: 250PSI
- Monitor Flange Standard: ASTM B16.5 Class150 4"/DIN2501 PN16 DN100
- Working Temperature : 0°C-80°C

## Valve Material List

NO.	Name	QTY	Material
1	Main Body	1	Ductile Iron
2	Nut	3	C954
3	2.5"Bolt	2	SS304/C954
4	4.5"Bolt	1	SS304/C954
5	Stem cap	3	Ductile Iron
6	Bolt	3	SS304
7	2.5"Tray	2	Ductile Iron/SS304/C954
8	4.5"Tray	1	Ductile Iron/SS304/C954
9	2.5"Sealing rubber sheet	2	EPDM
10	4.5"Sealing rubber sheet	1	EPDM
11	2.5"Platen	2	Ductile Iron/SS304/C954
12	4.5"Platen	1	Ductile Iron/SS304/C954
13	2.5"Outlet	2	C954
14	4.5"Outlet	1	C954
15	2.5"Outlet cover	2	Ductile Iron
16	4.5"Outlet cover	1	Ductile Iron
17	2.5"Cover gasket	2	EPDM
18	4.5"Cover gasket	1	EPDM
19	Cotter pin	3	SS304
20	Slotted nut	3	SS304
21	Cover chain		Gr.B



## General Technical Information

Model Number	House Outlet Size	Pumper Hozzle Size	Monitor
MH-1511	2X2.5"	1X4.5"	N/A
MH-1511A	2X2.5"	1X4.5"	YES
MH-1512	2X2.5"	1X4"	N/A
MH-1512A	2X2.5"	1X4"	YES